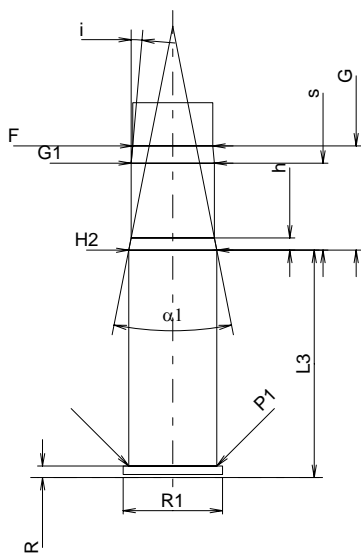
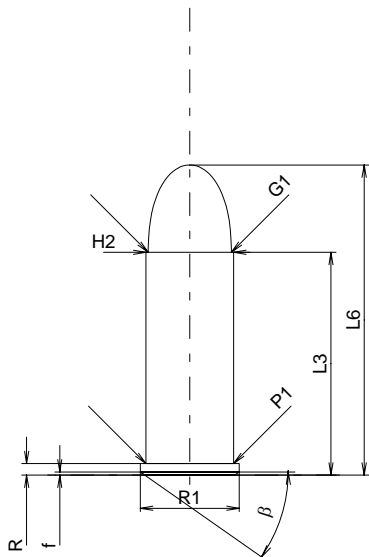


# C.I.P.

## 44 S&W Special

Country of Origin: US

TAB.	IV
Date	84-06-14
Revision	00-06-07



Scale 1:1

Dimensions in << mm >>  
Dimensions and Tolerances for Proof Barrels  
see Appendix CR 1.

### Maximum Cartridge

#### Cartridge Lengths

L1	=	
L2	=	
L3 <sup>1)</sup>	=	29.46
L4	=	
L5	=	
L6	=	41.02

#### Cartridge Head

R <sup>1)</sup>	=	1.52	-0.25
R1	=	13.06	
R3	=		
E	=		
E1	=		
e min	=		
delta	=		
f	=	0.40	
beta	=	35°	

#### Cartridge Body

P1	=	11.60
P2	=	

#### Cartridge Shoulder

alpha	=	
S	=	
r1 min	=	
r2	=	

#### Cartridge Neck

H1	=	
H2 <sup>1)</sup>	=	11.60

#### Bullet

G1 <sup>1)</sup>	=	10.98
G2	=	
F	=	
L3+G <sup>1)</sup>	=	43.26

#### Pressures (Energies)

##### Method Transducer

Pmax	=	1000 bar
PK	=	1150 bar
PE	=	1300 bar
M	=	17.50

#### Miscellaneous Dimensions

Fe <sup>1)</sup>	=	0.25
delta L	=	

### Minimum Chamber

#### Chamber Lengths

L1	=	
L2	=	
L3 <sup>1)</sup>	=	30.06

#### Chamber Head

R <sup>1)</sup>	=	1.52
R1	=	13.16
R2	=	
R3	=	
r	=	

#### Powder Chamber

E	=	
P1 <sup>1)</sup>	=	11.66
P2	=	

#### Chamber Shoulder

alpha	=	
S	=	
r1 max	=	
r2	=	

#### Chamber Neck

H1	=	
H2 <sup>1)</sup>	=	11.63

#### Throat Dimensions

G1 <sup>1)*</sup>	=	10.99
G <sup>1)</sup>	=	13.80
alpha1 <sup>*</sup>	=	22°12'50"
h	=	1.63
s	=	11.51
i <sup>1)*</sup>	=	5°
w	=	

#### Barrel Dimensions

F <sup>1)*</sup>	=	10.59
Z <sup>1)</sup>	=	10.90

#### Rifling

b	=	3.26
N	=	5
u	=	508.00
Q	=	90.65 mm <sup>2</sup>

Notes: 1) Check for safety reasons  
\* Basic dimensions